

PECO Model 110H

Installation and Operating Instructions

XTREAMPHASE® HORIZONTAL TWO STAGE LIQUID/LIQUID PHASE COALESCER



A. GENERAL DATA

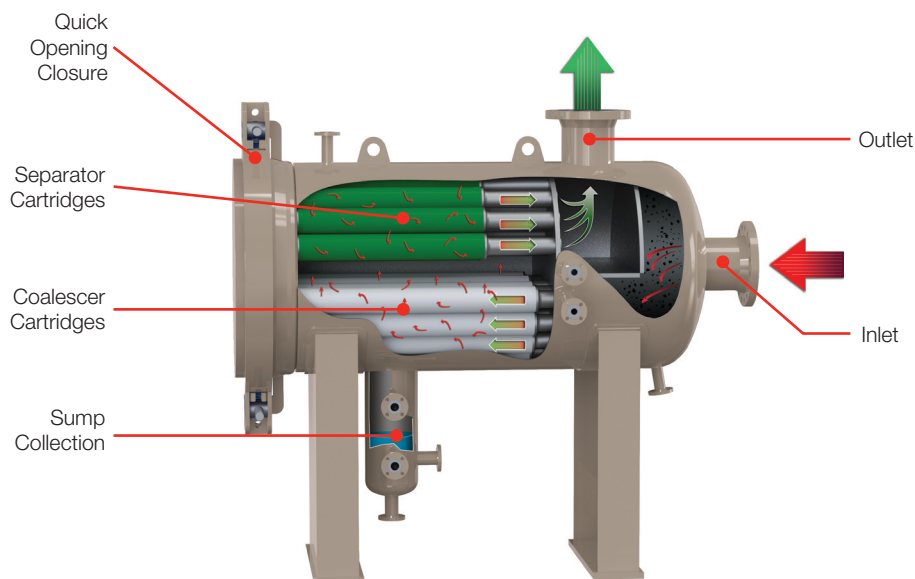
The XtreamPhase® Model 110H horizontal two-stage liquid/liquid coalescer vessel is designed to take a two-phase liquid stream and removed the dispersed phase from the continuous fluid stream. It is available in all major design codes and certifications from 10" through 84" diameter sizes.

The vessel is a two stage coalescer utilizing first stage hydrophilic coalescer cartridges and second stage hydrophobic separator cartridges to perform liquid separation. The replaceable coalescer and separator cartridges mount on supporting Z-bar riser posts welded into a cartridge support plate. A quick-opening closure is provided on the vessel in order to changeout cartridges. This unit is designed to operate for long periods of time completely unattended except for a periodic draining of the sump of units not equipped with automatic draining devices.



The cartridges in the vessel will become dirty or "spent" as solids collect on the cartridge. As this happens the differential pressure across the inlet and outlet flange connections of the vessel will begin to increase. The vessel should be serviced once the cartridges have reached the recommended change-out differential pressure. At that point the vessel should be taken off-line and the spent cartridges should be replaced with clean cartridges according to the procedure below.

Installation and operation should be undertaken in accordance with all plant safety procedures and standard operating procedures of the end user by authorized personnel only. If any difficulties are experienced during installation or in operation, consult Parker directly at (940) 325-2575 or your authorized, local Parker representative/distributor for assistance.

B. GENERAL ARRANGEMENT / FLOW 110H



C. INSTALLATION INSTRUCTIONS

1. Position the filter vessel on a flat surface and ensure there is adequate space in front of the closure to allow room to install/remove cartridges and above the closure for venting.
2. Connect inlet and outlet connections of filter vessel to piping of equal diameter. Check the filter vessel drawing to identify the location of each. It is recommended that the filter vessel be installed with by-pass and block valves to permit continued operation during cartridge changes.
 **Check to ensure that all blind flange bolting is properly torqued. Flange bolting is torqued at the factory, however may relax or loosen during shipment to the installation site.**
3. Close inlet and outlet connection valves.
4. Open the vent valve.
5. The blow-down connection should be valved and piped to a pit, tank, or blow-down system.
6. Two pressure taps are furnished on the vessel. It is extremely important that an accurate differential pressure gauge be installed on the vessel. Pressure drop is the only indicator that the operator has to tell him/ her when the filter vessel should be blown-down or by-passed to change the filter cartridges.
7. Open the filter vessel closure **(according to closure manufacturer's procedures)** and inspect the inside of the vessel. Verify the internals have not been damaged and that the gasket for the closure is in place. Install the cartridges and ensure they are seated properly in the basket support and that the cartridge seals are fully engaged.
8. Cartridge installation: This model uses both the coalescer and separator cartridges. The cartridges are double open end with metal end caps and gasket seals on each end. The coalescer cartridges will be on the bottom half of the vessel and the separator cartridges will be on the top half of the vessel. Slide the cartridges over the Z-bar riser post, install the washer dimples and nut provided with the cartridges.
9. Inspect the closure gasket to make sure it is new and in good condition. Make sure it is seated in the closure groove correctly.
10. Close the closure **(according to closure manufacturer's procedures)**.
11. Prior to filling the filter Vessel with process fluid, verify that the operating pressure and temperature are within the design limits of the filter Vessel. The design conditions can be found on the filter Vessel nameplate.
12. Review and follow all operating company safety procedures for filter operation.
13. Follow all operating company safety and lockout/tag-out procedures.
14. Verify that inlet and outlet connection valves are closed and that vent valve is open.
15. **Slowly and partially** open the inlet connection valve and introduce the process fluid stream into the filter Vessel. Allow fluid to purge air from the filter Vessel through the vent valve. Displaced gas may be hazardous depending on the liquid so take proper care when venting.
16. The filter Vessel is full once the process fluid comes out of the vent valve. Close vent valve.
17. Check for leaks. Should a leak occur, close inlet valve immediately and determine cause of leak.
 **Make sure to fully drain and depressurize the vessel prior to attempting to fix the leak.**

D. OPERATING INSTRUCTIONS

1. Once the filter Vessel is full of fluid and no leaks are found, open the inlet valve all the way.
2. **Slowly** open the outlet connection valve and begin flow through Vessel. Flow should be set based on recommended flow rate provided during sizing.
3. Slowly open the vent valve to check for trapped gas once again. If gas continues to build up in the top of the filter Vessel, an automatic vent valve should be installed.
4. Monitor differential pressure across the inlet/outlet. The filter is typically designed for 2 psid (0.14 bar) or less differential pressure at start-up at normal operating conditions.
5. As the cartridge loads with solids, the differential pressure across the filter Vessel is expected to increase. The cartridge should be replaced when the differential pressure reaches 15 psid (1.0 bar) at normal operating pressure or every year, whichever comes first.
 - Do not backflow the filter Vessel. A high velocity flow inside the cartridges could cause damage or cause the cartridge seal to become disengaged.
 - Do not clean the filter Vessel with steam with the cartridges still installed. Make sure cartridges are removed prior to any steaming performed.

E. MAINTENANCE INSTRUCTIONS - CHANGING SPENT CARTRIDGES

1. Review all operating company safety procedures prior to cartridge replacement operations.
2. Follow all operating company safety and lockout/tag-out procedures.
3. Open filter bypass valve (if available) and then isolate the filter Vessel by closing the inlet and outlet connection valves.
4. Bleed off the pressure by opening the filter Vessel drain valve, followed by the blow-down connection or vent valve.



Ensure that the filter vessel is drained and pressure is at atmospheric pressure prior to proceeding.

6. Open the closure (**according to closure manufacturer's procedures**).

7. Remove dirty (spent) cartridges.



Dispose of spent cartridges in accordance with plant procedures and applicable laws and regulations for disposal in your area.

8. Inspect and clean the filter Vessel as needed. Make sure all debris is cleaned from the cartridge sealing surfaces. Make sure no cartridge gasket seals have been left in Vessel during cartridge removal. If any Vessel damage is found notify Parker immediately. Do not operate Vessel until damage is fixed.
9. Install the new cartridges. This model uses both the coalescer and separator cartridges. The cartridges are double open end with metal end caps and gasket seals on each end. The coalescer cartridges will be on the

bottom half of the vessel and the separator cartridges will be on the top half of the vessel. Slide the cartridges over the Z-bar riser post, install the washer dimples and nut provided with the cartridges.



The use of original OEM cartridges is highly recommended to ensure the best overall performance of the filter. Replacement cartridges can be ordered through your local Parker distributor. The cartridge Item Number and Model Description can be found in the Manufacturer's Data Book supplied with your vessel.

10. Install a new closure gasket.



Installation of new closure gasket during each cartridge change is highly recommended.

The use of original closure manufacturer's gasket is highly recommended to ensure the best overall performance of the filter. Replacement gaskets can be ordered through your local Parker distributor. The closure gasket Item Number and Model Description can be found in the Manufacturer's Data Book supplied with your vessel and also on the Vessel nameplate.

11. Close the closure (**according to closure manufacturer's procedures**).

12. Make sure vent valve is open.

13. Make sure inlet and outlet valve are closed.

14. **Slowly and partially** open the inlet connection valve and introduce the process fluid stream into the filter vessel. Allow fluid to purge air from the filter Vessel through the vent valve. Displaced gas may be hazardous depending on the liquid so take proper care when venting.
15. The filter Vessel is full once the process fluid comes out of the vent valve. Close vent valve.
16. Check for leaks. Should leak occur, close inlet valve immediately and determine cause of leak.
17. Once the filter Vessel is full of fluid and no leaks are found, open the inlet valve all the way.
18. **Slowly** open the outlet connection valve and begin flow through Vessel. Flow should be set based on recommended flow rate provided during sizing.
19. Slowly open the vent valve to check for trapped gas once again. If gas continues to build up in the top of the filter Vessel, an automatic vent valve should be installed.

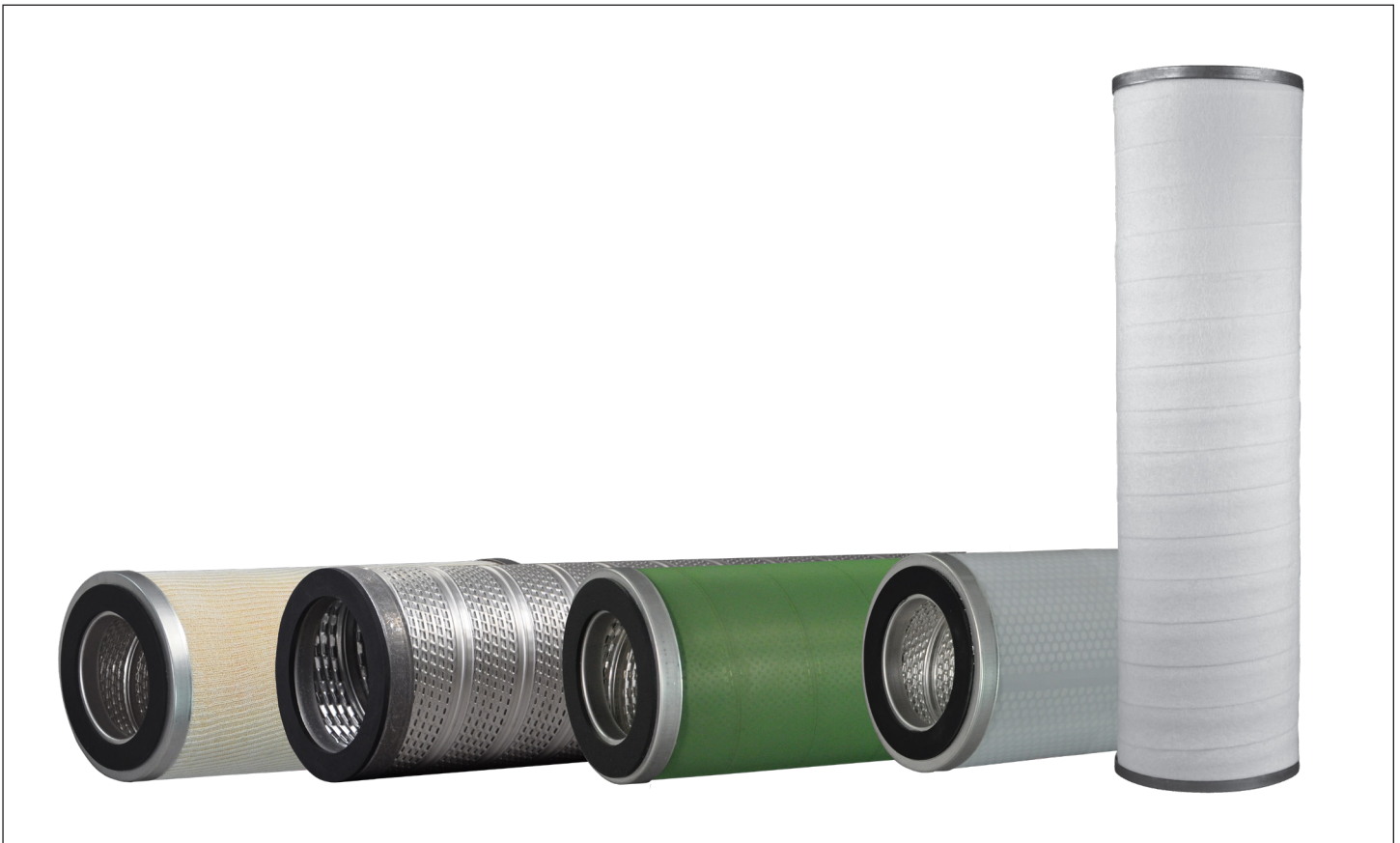


Make sure to fully drain and depressurize the vessel prior to attempting to fix the leak.

F. SUMMARY DATA

Recommended Cartridge Change-Out Differential Pressure..... 15 psid (1.0 bar)
 Maximum Cartridge Differential Pressure at Burst 25 psid (1.7 bar)

Note: The following pressure information is provided as a minimum guideline. Due to the variety of cartridge models that can be used in Vessel, it is strongly suggested to refer to the specific cartridge data sheet for further detailed pressure information. To prevent damage, never exceed the maximum allowable differential pressure of the cartridge support plate in the Vessel.



SERIES C, IPC, PLPC, S, S-SH & S-TF CARTRIDGES